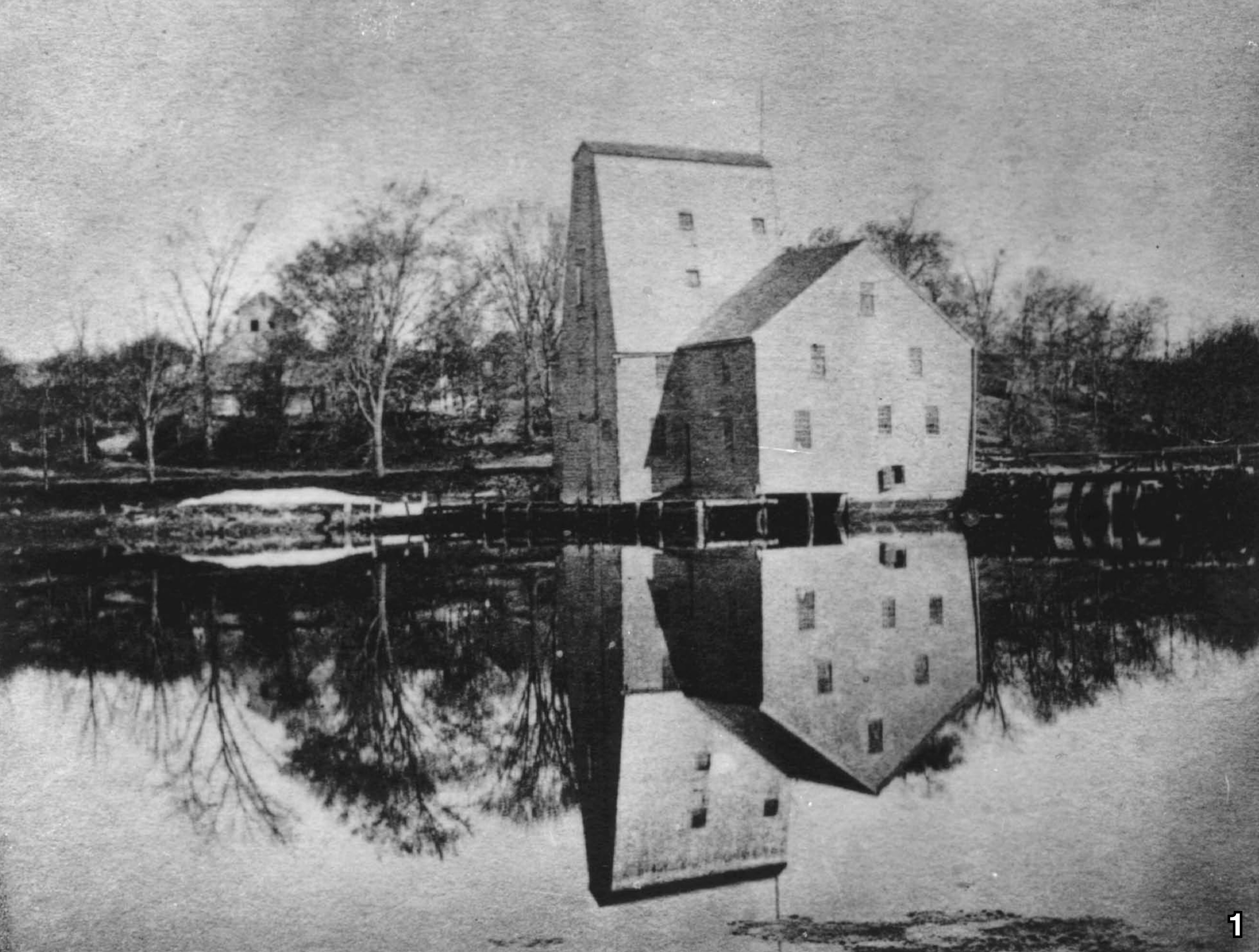


United Shoe Machinery Corporation

The Construction Years in Beverly, 1902-1905





The Founding Partners

COMING TO BEVERLY!

**United Shoe Machinery Co. So Decides. 150
Acres of Land Accepted.**

WILL EMPLOY OVER 2,500 MEN. COST OF PLANT HALF A MILLION.

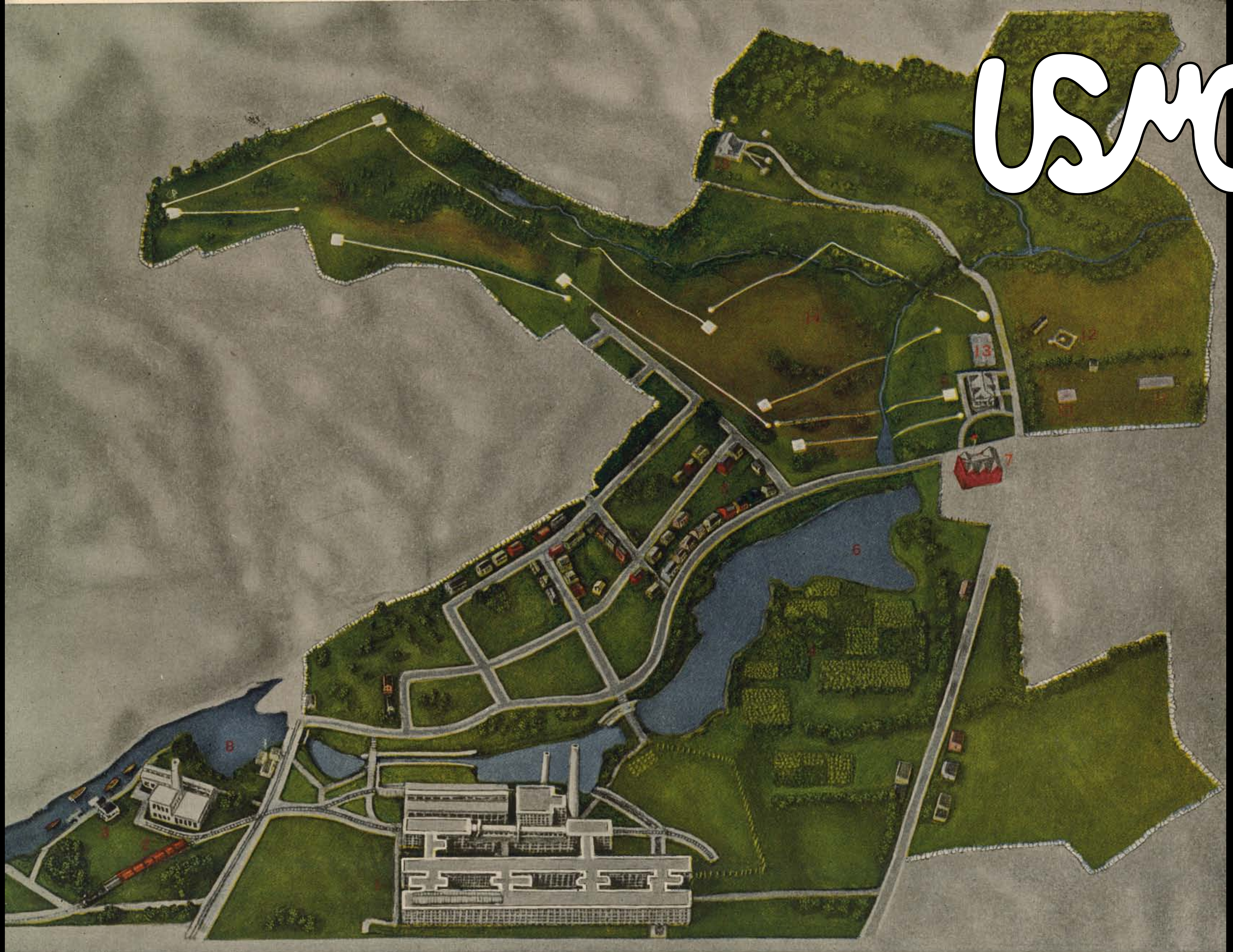
Two Parallel Main Manufacturing Buildings 600 Feet Long by 60 Feet Wide Each, and Three Stories High. An Administration Building Three Stories High. A Storage Building 400 Feet Long, Three Stories and Basement. Drop Forge. Blacksmith, Die Sinking and Hardening Plant, One Story in Height. A Foundry With a Capacity of 20 Tons Per Day and a Central Power Plant of 1,800 Horse Power.

**A TOTAL OF OVER 10 ACRES OF FLOOR SPACE AND THE WHOLE CON-
NECTED BY UNDERGROUND RAILWAYS.**

One Thousand Homes to be Built for Employees.

Pay Roll Will Amount to Over \$50,000 a Week.

USMC



FACTORY AND GROUNDS OF THE UNITED SHOE MACHINERY COMPANY AT BEVERLY, MASSACHUSETTS

- | | | | | |
|------------------------|----------------------|--------------------------------|---------------------|------------------|
| 1 Factory | 4 Employees' Gardens | 7 Winslow School | 10 Cricket Crease | 13 Tennis Courts |
| 2 Drop Forge | 5 Employees' Houses | 8 Bass River | 11 Soccer Football | 14 Golf Course |
| 3 Employees' Boat Club | 6 Lake | 9 Employees' Country Clubhouse | 12 Baseball Diamond | 15 Gun Club |

USMC



AUG-28-03

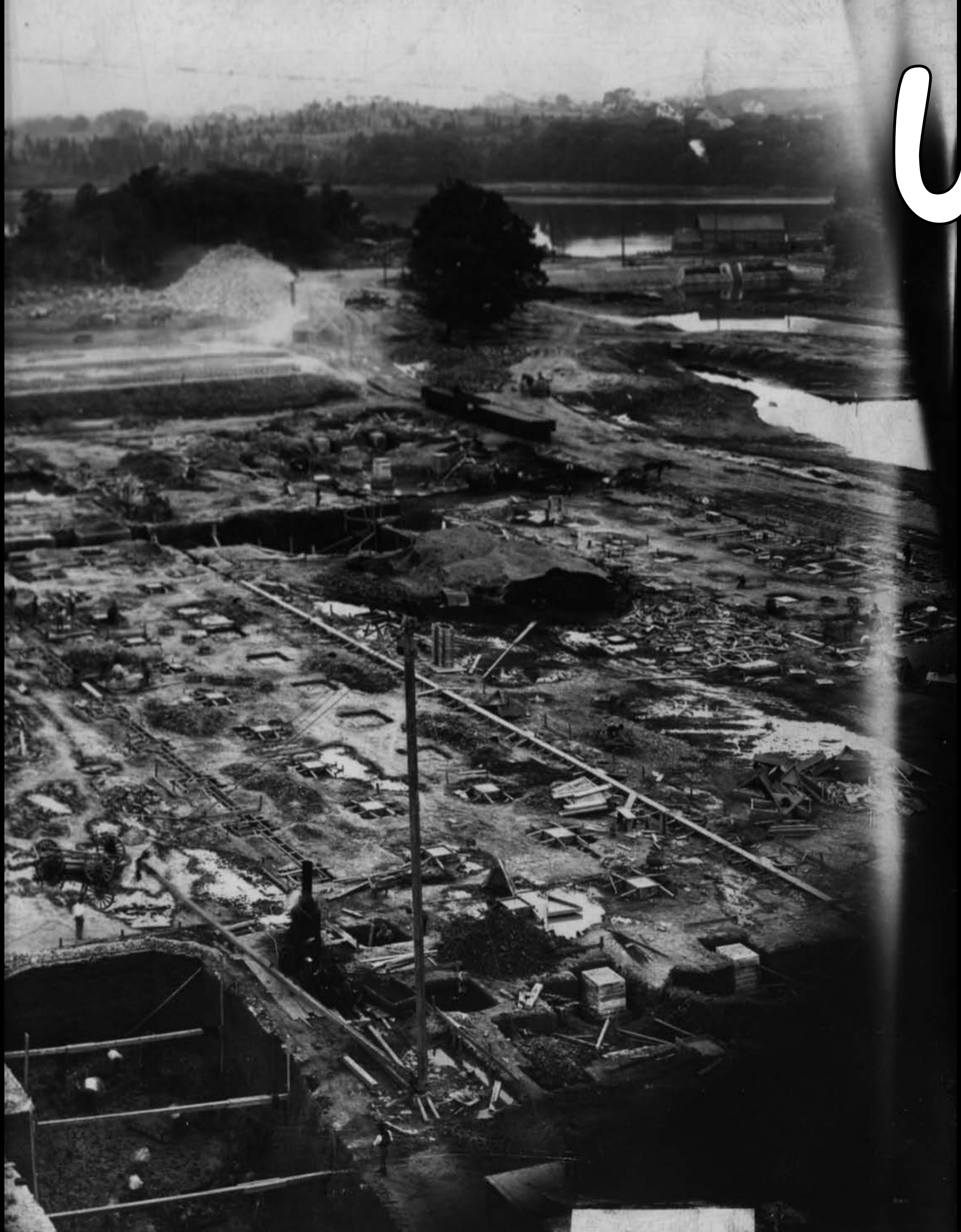
USMC





USMC

USMC



11-18-03



USMC





11-17-03
A#5

USMC



11-14-03

USMC



USMC



11-17-03

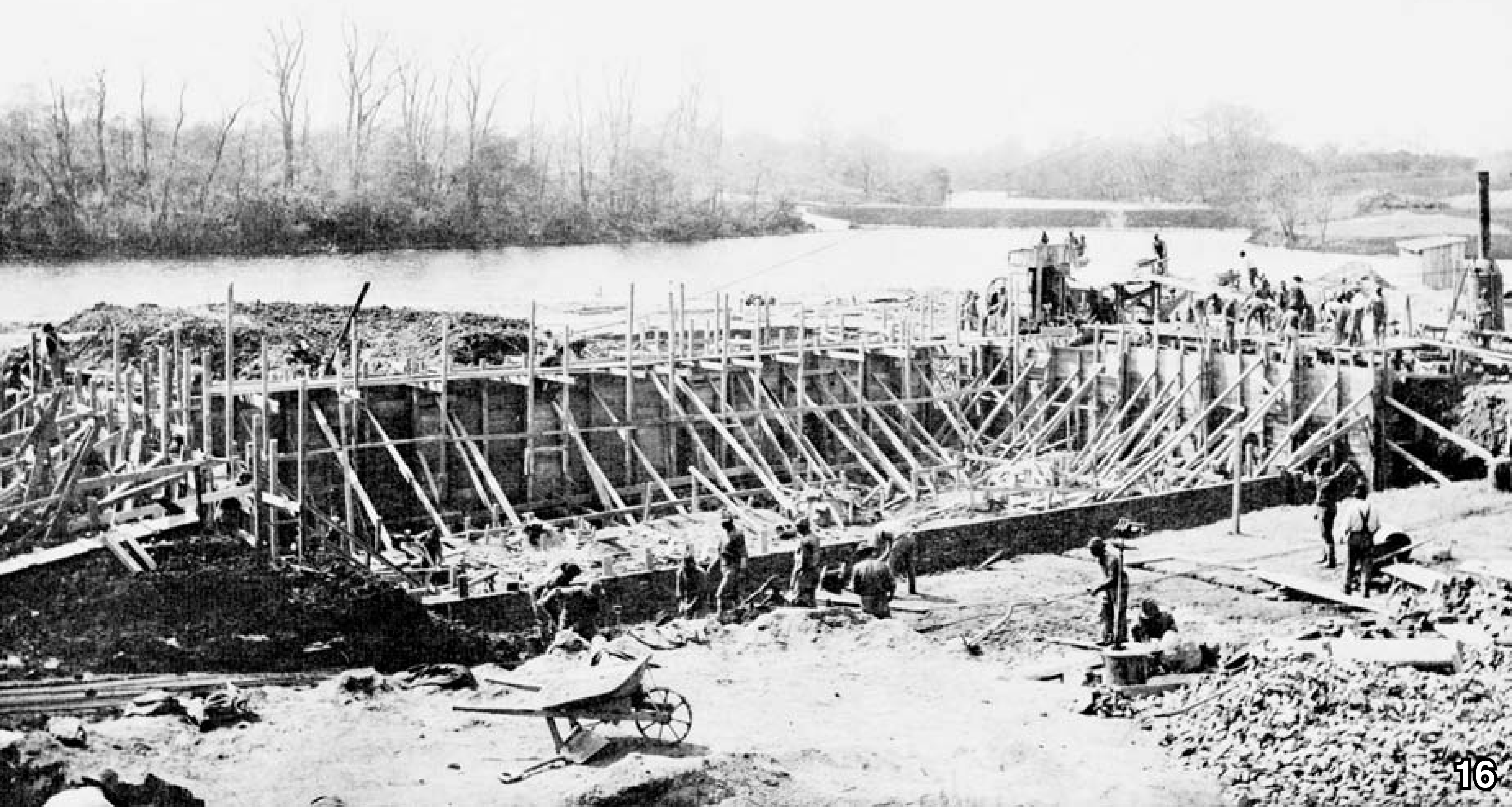
USMC



MAY 21-04. BLD. F. PARTIALLY EXCAVATED. FORMS FOR BOILER ROOM BEING POURED.

B-7

USMC



USMC



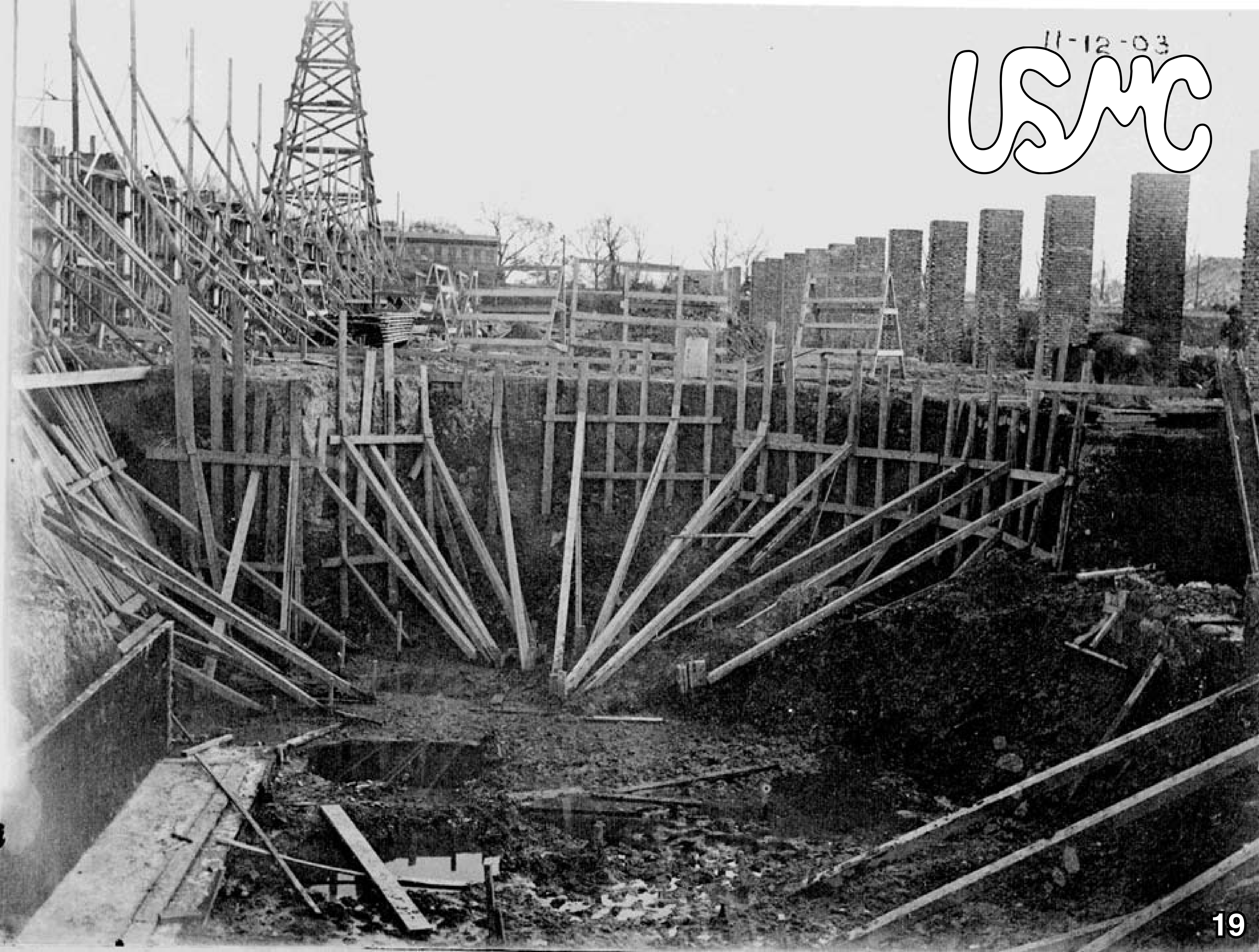
USMC



AUG-19-03

11-12-03

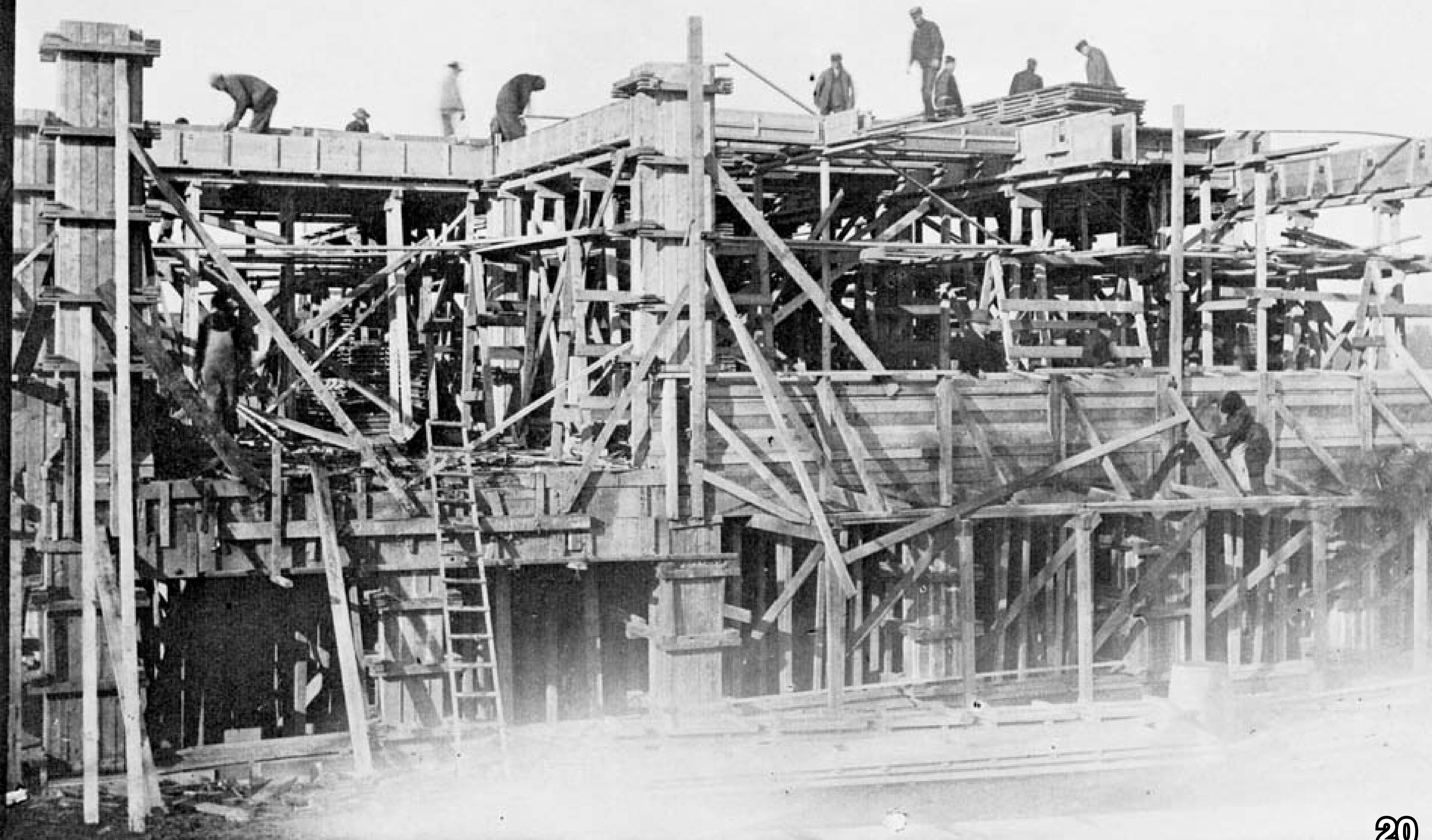
USMC



11-19-03

A#8

USMC



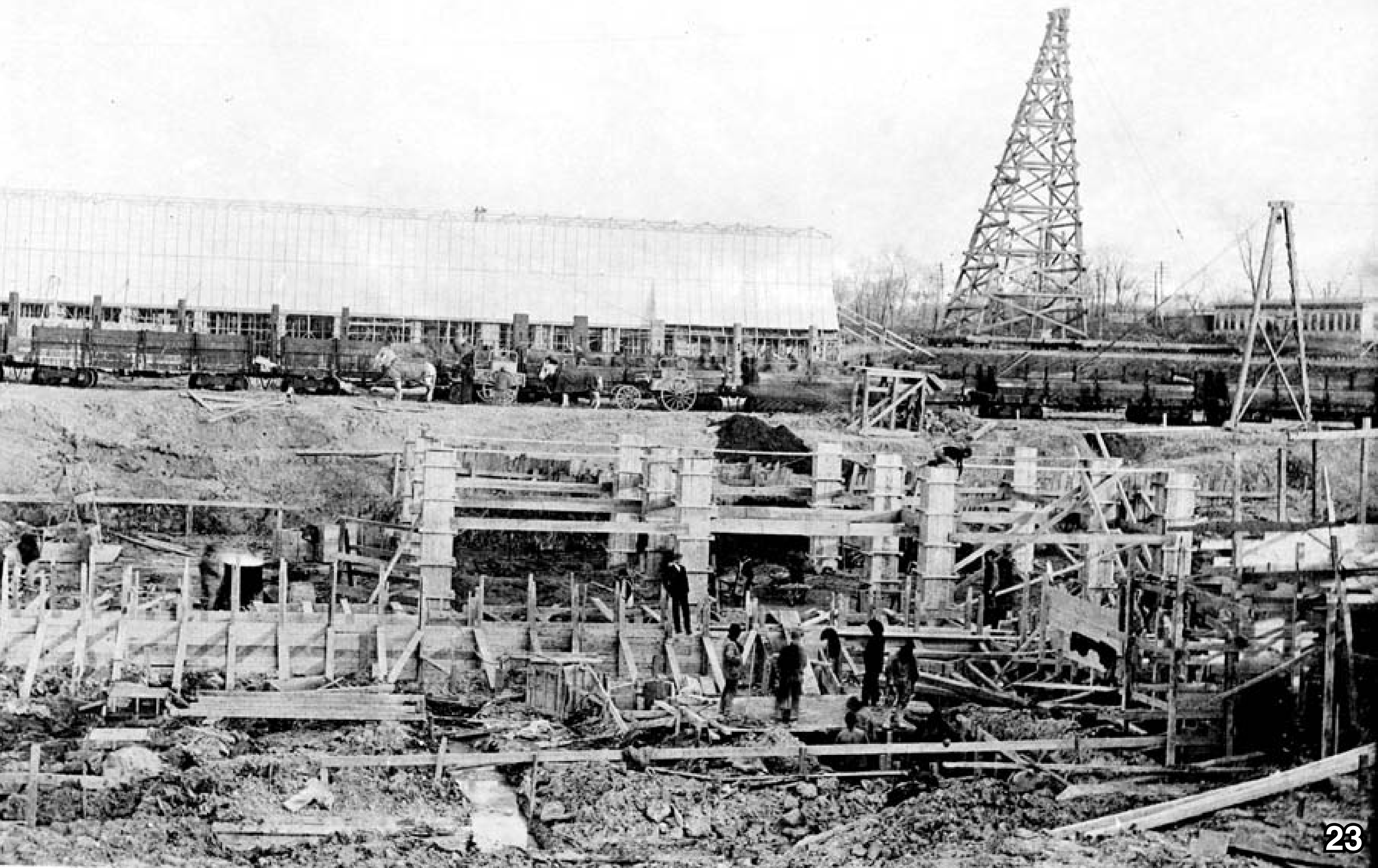
BLDG "B" - FROM THE NORTH END OF BLDG "A" JUNE-1-04

USMC "B" - 1



USMC





USMC



USMC



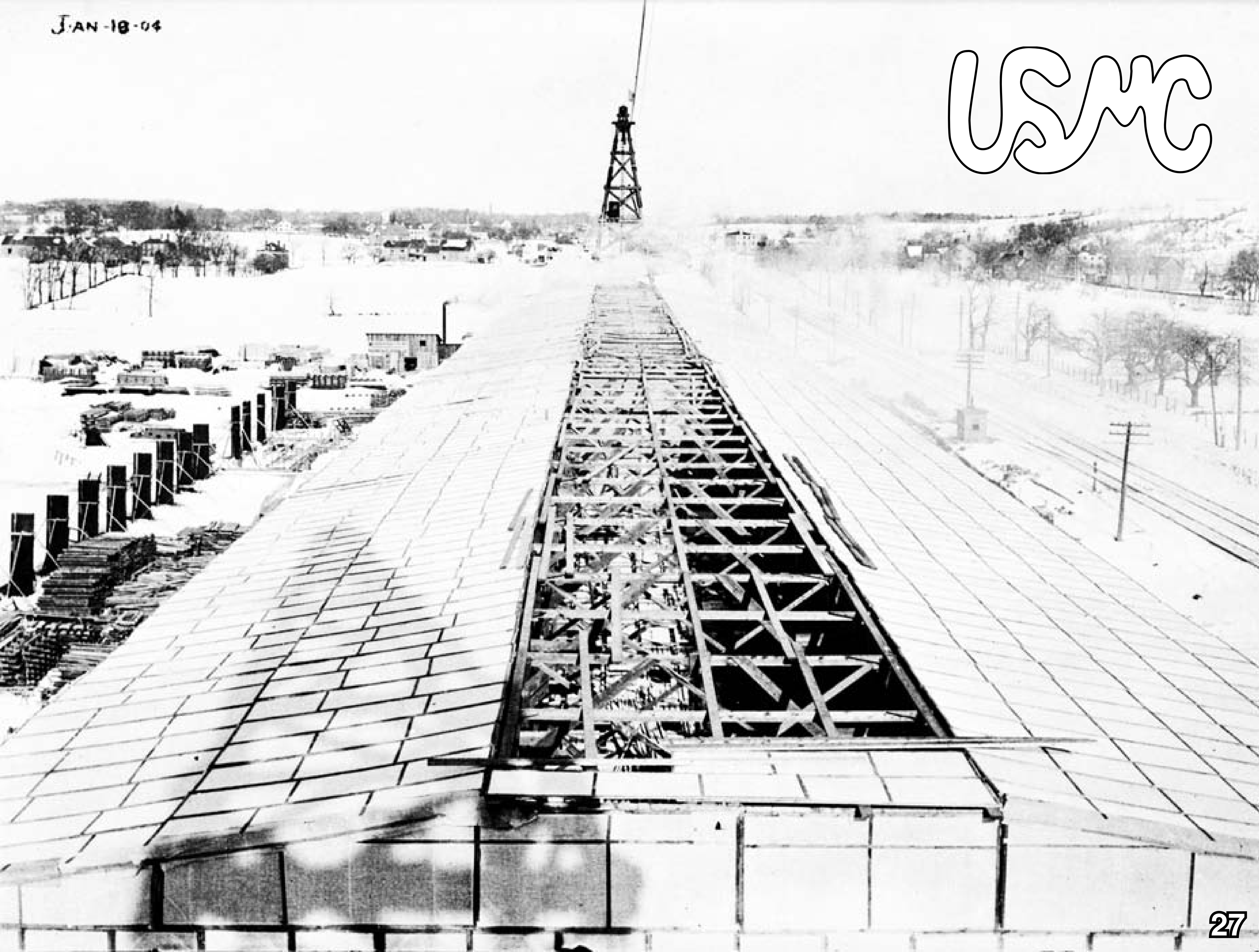
052

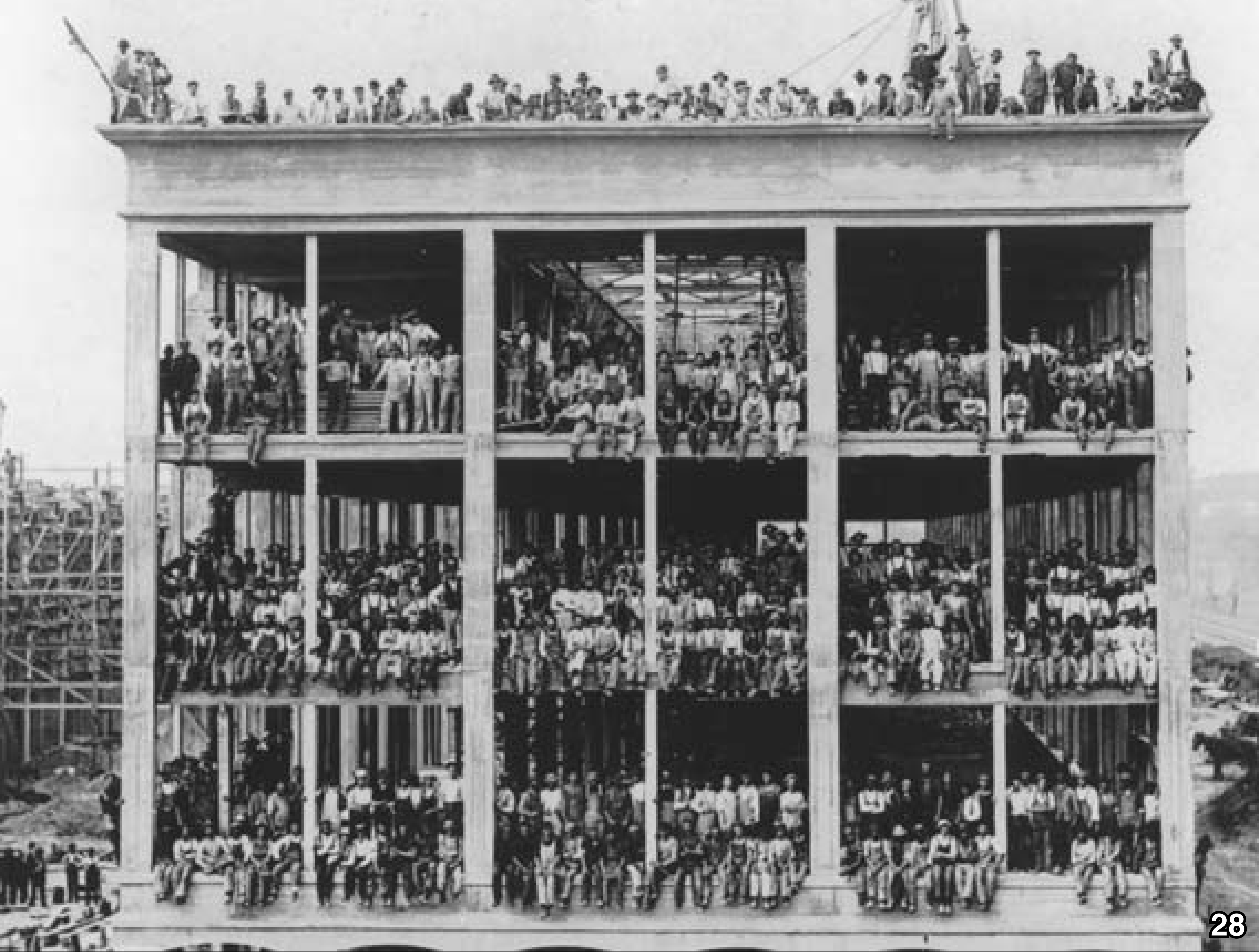
USMC



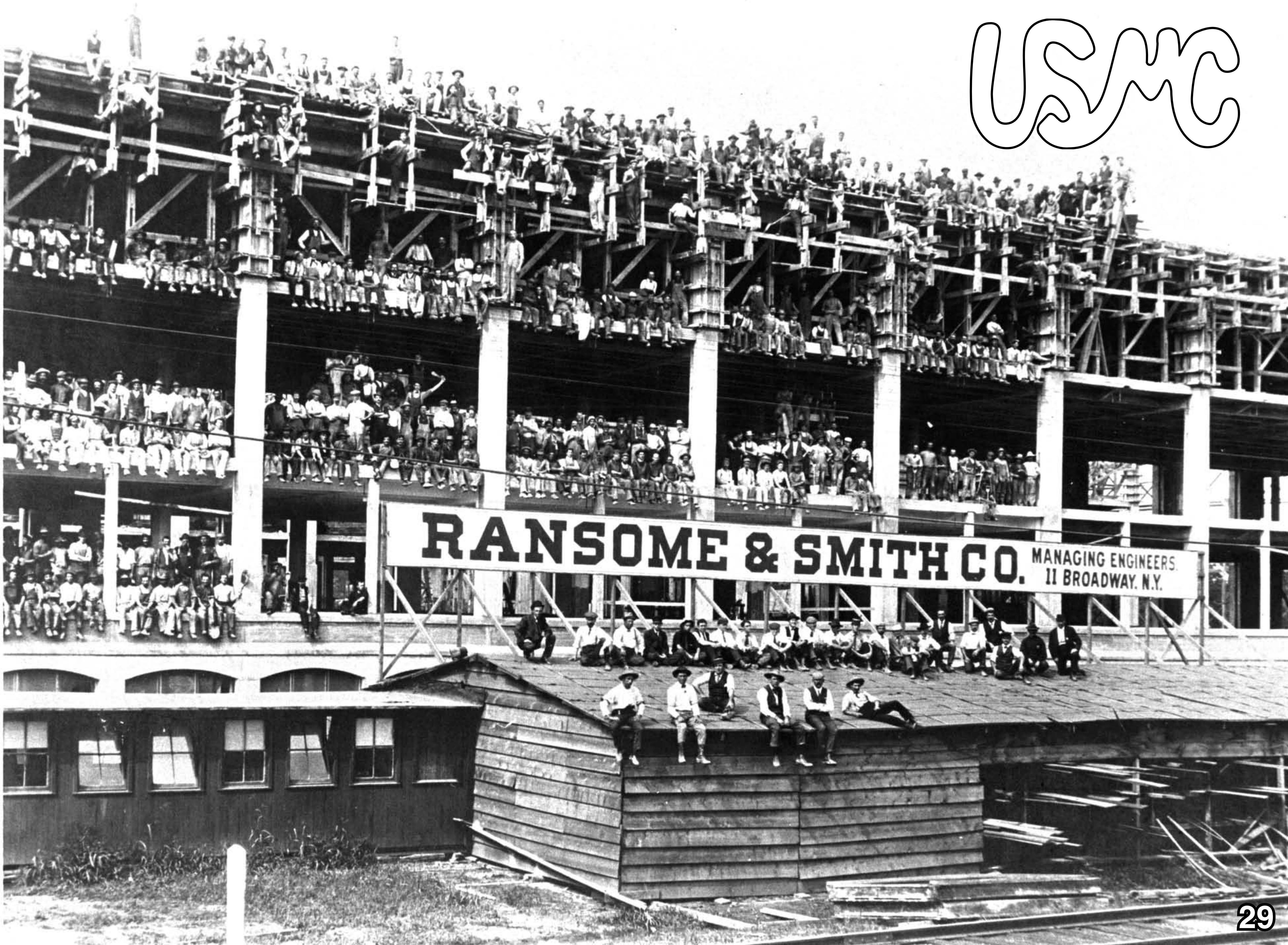
JAN-18-04

USMC

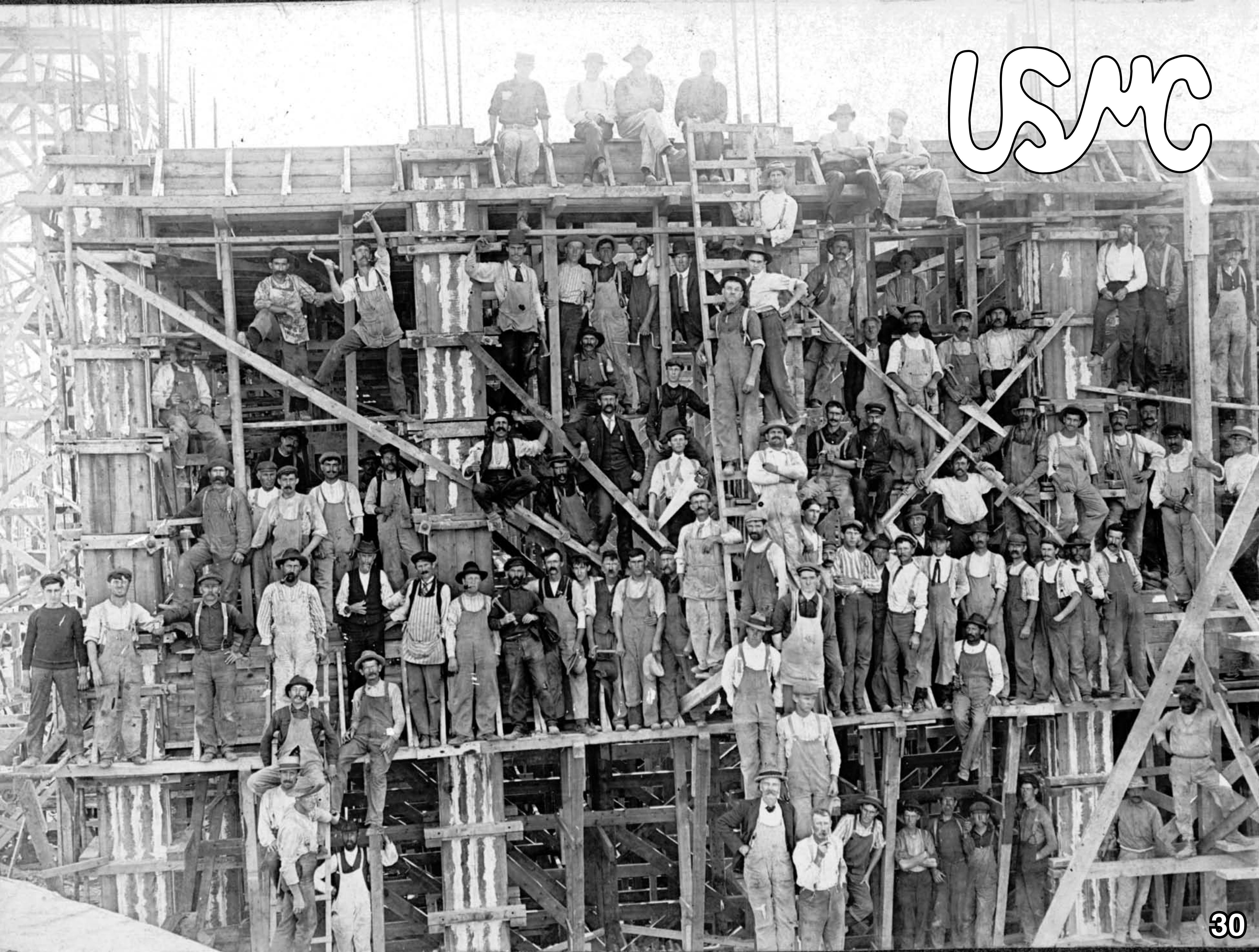




USMC



USMC



**Thank you for your interest in Cummings Center.
For more information about leasing space in this
historic campus, please contact:**

Steve Drohosky

Vice President and General Manager

978-922-9000

SJD@cummings.com